

MS8200-IDH

Integrated Dual Head Multibeam Echo Sounder

Product Introduction

- MS8200-IDH is a complete and powerful multibeam echo sounder with 1024 beams per ping, allowing for bigger swath performance and higher survey efficiency under challenging acoustic conditions. Unprecedented clean bathymetry data reduced processing complexity and make survey operation easier and faster. Dual heads enable multiple detections of increased target details and very advanced beamforming modes.



Specifications

Item	Parameter
Working Frequency	200kHz
No. of Beams	1024
Depth Resolution	0.75cm
Swath Coverage	220°
Beam Width	1°×2°
Depth Range	0.5-500m+*
Pulse Width	30us-8ms
Signal Type	CW/Chirp
Operating Modes	Equiangular / Equidistant
Max. Ping Rate	60Hz
Max. Working Depth	50m
Tilt Angle	30°

* Depending on environmental conditions.

Product Features



Efficiency Upgrade

Dual heads mode means that the swath width is increased by twice. So surveyor can greatly reduce the field working time and increase work efficiency



Well-adapted

According to different measuring environment and demand, the parameters such as beam width and frequency can be adjusted to obtain better measurement results



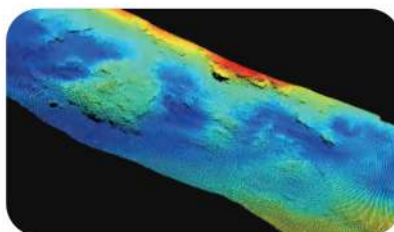
Fully Automatic Measurement

Simplify the field operation process and truly make the underwater exploration work better

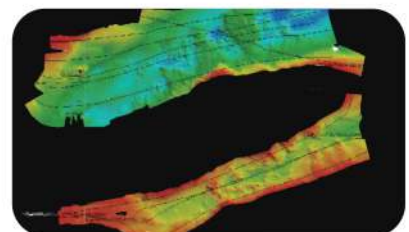
Applications



Large-scale Seabed Survey



Offshore Construction Monitoring



Wide Range Channel scan