



wassp[®]
MULTIBEAM

SEE IT ALL

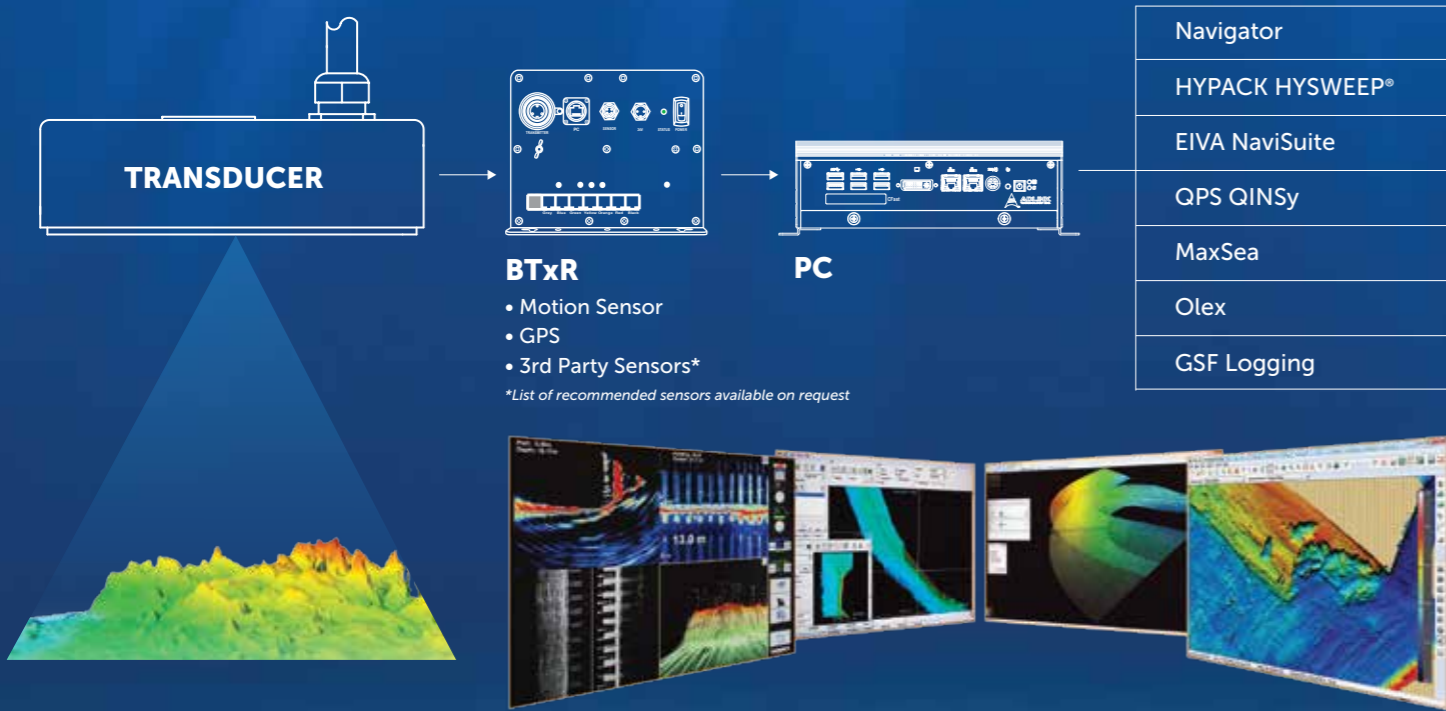
MULTIBEAM
FOR SURVEY
AND MAPPING

WASSP MULTIBEAM SONAR

Using advanced signal processing techniques coupled with the latest generation hardware platforms, the WASSP WMB-3250 range is a high-quality multibeam solution that breaks the tradition of MBS being a complicated technology to use. Ideally suited for shallow to mid water applications – WASSP delivers to the user an easy to use yet comprehensive feature and functionality set, all packaged in a compact design that is suited to either mobile ‘pole’ mounting or permanent hull installations.

Compliant to IHO Order 1a, WASSP delivers reliable, high quality data-sets that can output in real-time to a variety of market leading software suites in addition to its own native Navigator suite. With 224 beams @160kHz and a swath of 120°, the 3250’s calibrated platform is perfectly suited to coastal and estuarine applications.

Flexibility and user-focus is key to WASSP. We’ve put sophisticated world leading MBS technology in a package that is both truly user friendly and provides all the functionality and performance expected of a professional survey and mapping product.



wassp® SEE IT ALL
MULTIBEAM

PERFORM

Proven Technology

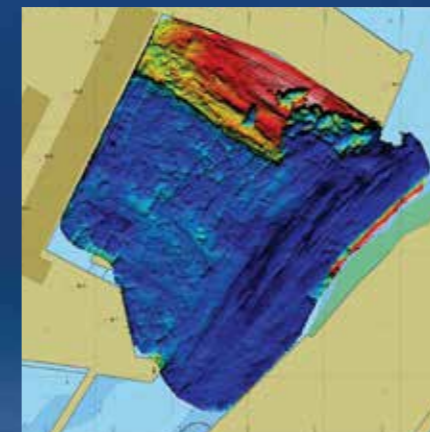
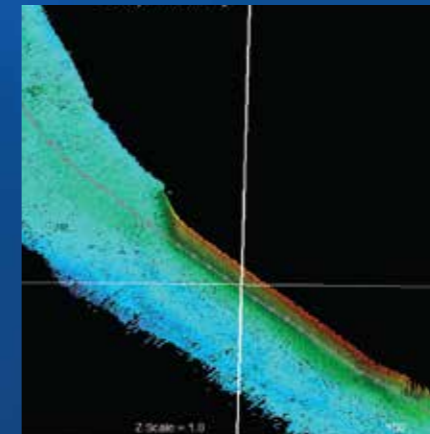
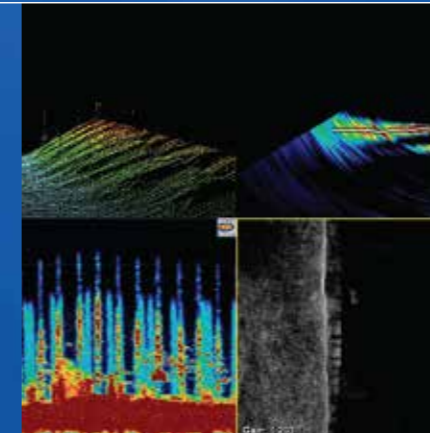
With over 700 systems around the world, WASSP is a field proven MBS solution. Our customers trust and depend on the reliability, quality and results that WASSP delivers. Performance and data integrity underpin our reputation and success, with our latest generation being fully calibrated, the WMB-3250 will deliver data able to withstand the most demanding QA requirements.

Cost Efficient

Choosing WASSP means you are choosing one of the most cost-effective MBS solutions on the market giving you the competitive edge needed in today’s survey and mapping market. Costs matter. WASSP breaks the traditional MBS concept of being expensive and complicated. Easy-to-use, feature rich and at a price point that enables MBS to be a serious option for those who could not previously have considered it

Versatile

Easy-to-use, WASSP also provides the user with a versatile platform with a broad selection of comprehensive functions to meet the most demanding of survey and mapping work. Used as a standalone turn-key package with its own Navigator GUI (provides multiple display modes to view real-time data processing, QC and seafloor visualisation – 2D/3D – side scan – sonar - bathymetric) or exporting data seamlessly to any of the current engineering suites we interface to, WASSP provides a one-stop solution for your MBS requirements. Port survey, dredging, coastal and estuarine mapping all fall within the capability of WASSP.



WMB-3250 SPECIFICATIONS

GENERAL	
Frequency	160 kHz
Specified Depth Capability	2m - 200m +
Maximum Range Scale	300m
Output Power	40 W to 1 kW
Beam Spacing	Equi-Angular / Equi-Distant
Electronic Beam Width	224 beams x 0.54° over 120°
Max Ping Rate	46 (@10m range)
Maximum Resolution	7.5cm
<i>(height of smallest target detectable at nadir)</i>	
CW Pulse Duration (ms)	0.1, 0.2, 0.5, 1.0, 2.0
Roll Correction*	Yes
Pitch Correction*	Yes
Heave Correction*	Yes
Ships Reference Corrections*	Yes
Characterised Transducer / Transceiver availability	Yes
PPS Time Synchronisation	Yes

** (Accuracy based on sensor used)*

DISPLAY MODES	
Acoustic	Sonar view
Acoustic	Amplitude & Phase
Advanced Mapping	Water column, Chart, & Contour
	Overlay options
Display Windows	Acoustic Display (1): 1/2/3/4-way split-panels; Navigator Display (2): 1/2 way split-panels (User-configured)

HARDWARE	
Transducer	Suits In-hull tank mount / Pole Mounting, with 5/10/20m cable* (* gland optional; excludes pole assembly or tank assembly)
Transceiver (BTxR)	Black box transceiver with Ethernet output (suits bulkhead/floor mounting)
Processor	High Performance Advanced Ruggedized Fanless Marine Processor with keyboard and trackball

DIMENSIONS & WEIGHT	
Transducer Dimensions	328 x 163 x 94 (LxWxH, mm)
Transducer Weight	15 kg (Cable dependent)
Transceiver (BTxR) Dimensions	535 x 221.5 x 180 (LxWxH, mm)
Transceiver (BTxR) Weight	5 kg
Processor Dimensions	230 x 205 x 75 (WxDxH, mm)
Processor Weight	3.8 kg

DATA INTERFACE	
Input*	NMEA0183 & RS232 PFEC ATT, GGA, GGL,HDT, HDG, PFEC, HVE, VTG, ZDA, TSS/TSS1, SHR

3RD PARTY SOFTWARE COMPATIBILITY	
Software Interfaces*	Olex, MaxSea, EIVA NaviSuite, HYPACK/HYSWEEP®, QINSy®, GSF logging

*WASSP requires (3rd party) position, heading, roll, pitch and heave data for electronic beam compensation/stabilization (not included - local supply). See your local WASSP expert for more information/clarification.

WHO WE ARE

WASSP is part of the ENL Group, an electronics engineering company with a 60+ year history of innovation and expertise in the marine field of sonar, radar and communications. We design and provide software and hardware solutions to multiple markets globally – survey and mapping, defence, commercial fishing and OEM. Solving customers problems is our passion and as a technology leader we know that understanding customers needs is key to developing successful solutions that consistently deliver to expectations and also give a competitive edge.

WASSP has established a reputation globally for technology innovation. Our game changing WASSP technology has put sophisticated MBS technology within reach of many who up until now would have considered it beyond reach. WASSP has changed that. No longer the domain of large complicated systems requiring equally large budgets, WASSP is arguably one of the most cost-effective and versatile MBS systems available on the market, and we intend to keep it that way.

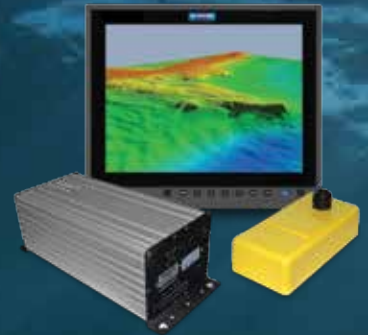
WORLDWIDE SUPPORT

WASSP is sold and supported by a global network of authorised distributors. We also offer comprehensive technical and user training and can extend direct technical support worldwide if required*. Our technical support department extends its services online 24/7. Wherever our customers are, we like to think we're there with them.

*terms and conditions apply

"The WASSP Multibeam system has given us access to a first class shallow water survey tool, that was once cost prohibitive."

Zane Thackery,
Hydrographic Surveyor, Durban,
South Africa



Contact WASSP

P: (+64) 9 373 5595

F: (+64) 9 379 5655

E: sales@wassp.com

To find a WASSP dealer near you visit

www.WASSP.com



wassp[®] SEE IT ALL
MULTIBEAM

ENL
Group Company